

Model TSM-60-3516

High compact MSTP

Introduction

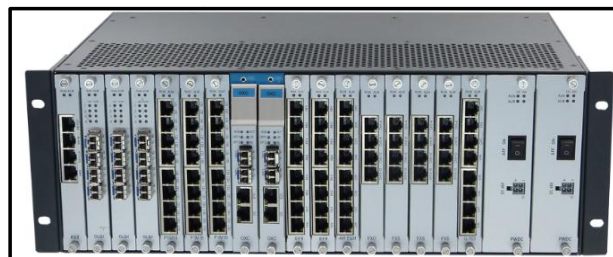
TSM-60-3516 is extreme high compact and powerful MSTP equipment, it integrates all kind of transport platforms, such as IP Ethernet, SDH, PDH, DDN, PCM all together; supports all type of digital services, such as digital cross connect (DXC), IPPBX, voice/data drop/insert services all-in-one on a 3.5U height, 19 inches wide the equipment shelf.

By the advanced state-of-art modular design, TSM-60-3516 has the 10Gbps back plane main bus, make it capable to provide the most flexible combination of services to fulfill all kind of modernized communication demand. Its compact chassis provides dual controller, dual power supply and interface card hot swappable capability, make it the most reliable equipment to use for access, even core network.

With its versatile and incredible capability, it can be configured as SDH switch, TDM over IP switch, digital cross connect switch, an IPPBX switch or even all together, and provides cross connection and signal conversion between all these channels.

Feature

- The most high compact MSTP equipment with just 3.5U height shelf
- Standard 19" rack mounting front access chassis with fan unit on the back
- 10Gbps ultra-high capacity main bus back plane
- Hot swappable for controller and all types of trunk cards and user cards
- High flexibility with modular design, common slot for trunk and user cards
- Extra large scale switching capacity with 7200 x 7200 non-blocking switching
- Reliable structure with 1+1 controller, 1+1 power supply and 15 common slots for trunk and user cards
- Sophisticated configurable system protection with 1+1 MSP, SNCP network protection and 1+1 interface protection
- Versatile configurable function as SDH switch, DXC, TDM over IP switch, IPPBX or signaling gateway
- System supports 4 x STM-16, or 20 x STM-4, or 60 x STM-1 optical ports
- Ethernet supports 12 x GE, or 120 x FE electrical ports
- Total 7200 timeslots cross connection for TDM over IP Ethernet
- Data interface provides V35, V24/V28, RS232 for selection
- Analogue interface supports FXS, FXO, 2/4 wires E&M, MAG and HOT line
- IPS card can register 400 x SIP phones or defined as 400 x SIP trunks
- IPS card supports general PABX function with all kinds of call feature, such as caller display, call forward, call transfer, call waiting, call pickup, call back, call hunting, DND (Do Not Disturb), DID (Direct Inward Dial), DOD (Direct Outgoing Dial), CDR (Call Detail Record), IDD & DDD lock, wake-up call, voice mailbox, background music ... etc.
- Sophisticated signaling interchange feature supports analogue and digital voice signaling conversion, includes SIP, ISDN/PRI, SS7, V5.2, R2, DTMF, 2/4 Wires E&M, FXS/FXO etc.



Specifications

- Number of Slots
 - 15 slots for interface, 2 slots for controller, 2 slots for power supply
- System Cross-connection Capacity
 - 192 x 192 VC4 high order cross-connection;
 - 4032 x 4032 VC12 lower order cross-connection;
- System Maximum Capacity
 - 4 x 2.5Gbps SDH Optical Port (I-16, S-16.1, L-16.1, L-16.2)
 - 20 x 622Mbps SDH Optical Port (I-4, S-4.1, L-4.1, L-4.2)
 - 60 x 155Mbps SDH Optical Port (I-1, S-1.1, L-1.1, L-1.2)
 - 12 x GE Electrical Port 120 x FE Electrical Port
 - 240 x E1 Port 240 x FXO Port
 - 240 x FXS Port 240 x RS232 Port
 - 120 x 4WE&M Port 120 x V35 Port
 - 7200 TS x TDM over IP 60 x FV35 Trunk
 - 60 Digital Trunk 400 x SIP-T or
 - 400 x SIP-U
- Network Protection
 - 1+1 MSP, SNCP
- Equipment Protection
 - Cross-connection matrix and clock unit 1+1 protection
 - Uplink and downlink interface card 1+1 protection
 - Power 1+1 protection
- Clock Port
 - 1 output, 1 external input (2Mbps or 2MHz optional)
- Clock Working Mode
 - Lock mode, holdover mode or Free-run mode
- Mechanical Dimension
 - 440mm (W) x 280mm (D) x 159mm (H)
- Power Supply
 - Input voltage: -48Vdc and/or 220Vac
 - Voltage range: -36Vdc ~ -82Vdc, 165Vac ~ 265Vac
 - Power consumption: <200W with full loading
- Operation Environment
 - Working temperature: -10°C ~ 50°C

Application

