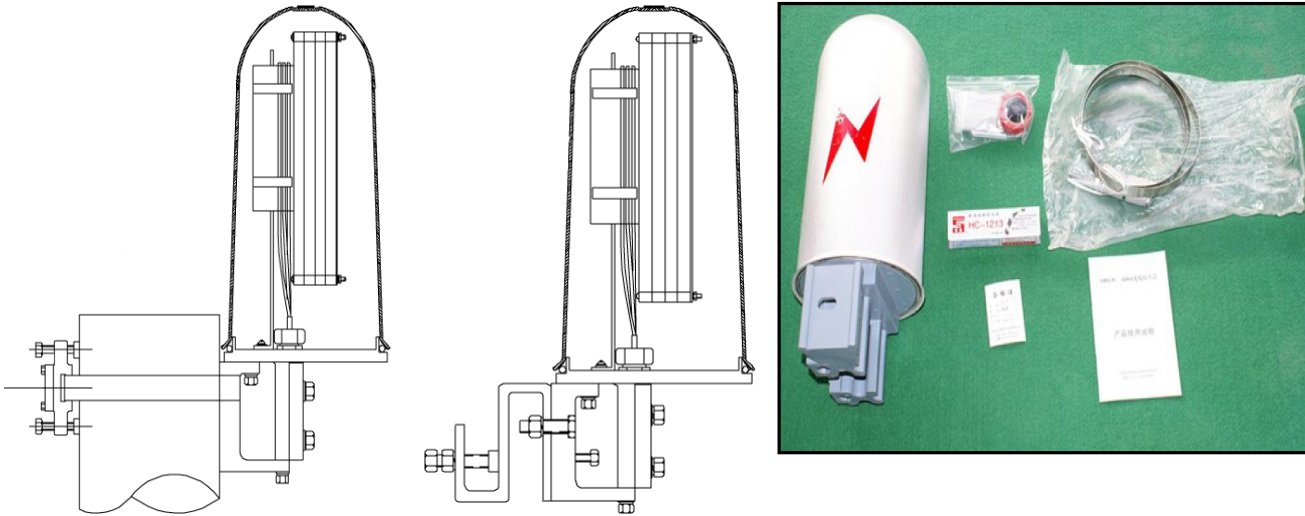


MANCH.OPGW.48DM OPGDW SPLICE CLOSURE



Usage:

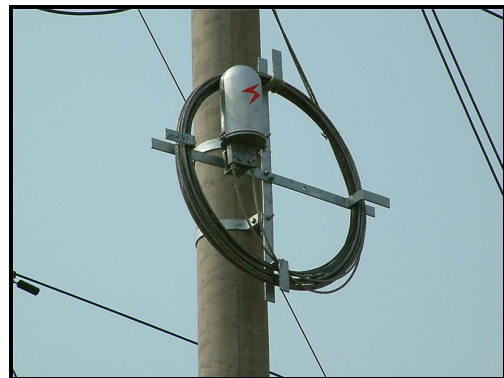
Suitable for OPGW cable connection protection, has the function for direct connections and divergence connection, which can out of 4 cable, installed in the overhead pole, tower.

Structural features:

- Joint Box using aluminum alloy shell, resist-corrosion, high mechanical strength.
- Joint box seals with seal ring and silicone, simple operation, open repeatedly, easy maintenance.
- can make joint box connect ground according to the requirements ,equipped with the special fixture of towers and pole.

Technical parameters:

- fiber radius of curvature $\geq 43\text{mm}$.
- fiber length of the plate to stay $\geq 1500\text{mm}$.
- additional attenuation of optical disks to stay $\leq 0.01\text{dB}$.
- the maximum capacity of fiber optic ≤ 144 -core optical fiber.
- suitable temperature range $-40\text{ }^{\circ}\text{C} \sim +80\text{ }^{\circ}\text{C}$.
- flattening performance $2000\text{N}/100\text{mm}$.
- Weight 6.7kg . h. Overall dimensions $480\text{mm (H)} \times 200\text{mm } (\varphi)$.



Ordering Information:

- OPGW fibers.
- in and out
- divided into pole used and tower used. If pole used, it need to provide the pole diameter.