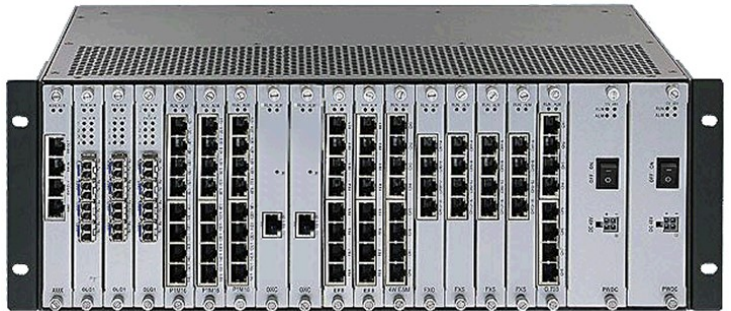


Model: TSM-50-5064

Aggregate Multi-function Multiplexer



Introduction :

TSM-50-5064 adopts 3.5U height standard 19" rack mountable chassis for exchange office. The powerful switching matrix provides 7680 x7680 non-blocking cross connections. System supports maximum 240 x E1, and 240 x 64Kbps channels with the expansion chassis. Various network cards, such as PDH, E1 and TDMoIP (Ethernet) uplink card are available for fitting different networks requirement.

System designs with reliability enhancement, such as redundancy controller, 1+1 uplink and dual power supply. It can configure for point to point or point to multipoint networking with different type of transport media; and it can execute D/I (drop/insert) function by cross connection matrix as well.

PT-50T 3519 is managed by the powerful NMS system for real time monitoring, local / remote diagnostic and alarm control. System software can be downloaded remotely through the management control center without engineer on site.

Characteristics:

- Enhanced redundant and hot swappable design for controller, network interface and power supply;
- Versatile concentration platform, support E1, PDH and TDMoIP networking;
- Reliable system design with redundant controller, 1+1 optical link protection and dual power supply;
- Powerful 7680 x 7680 non-blocking matrixes for 240 x E1 cross connection;
- Synchronous data module includes 64Kbps co-directional, N×64Kbps data interface;
- Asynchronous data module with RS232 and RS485 interface;
- Voice module includes FXO, FXS, Hotline, Magneto, Carrier-wave and 2/4-wire E&M interface;
- Data modules include RS232、RS485、V35、G703;
- Total 19 slots: 2 fixed slot for Master control card, 2 fixed slot for Power supply, 15 slots for service business;
- NMS port: RS232 or Ethernet interface;
- Upgrade firmware and software remotely;
- Power supply with AC220V or DC-48V, or AC220V + DC-48V.

Specifications:

- | | |
|--|---|
| <ul style="list-style-type: none"> ➤ E1 Interface
Bit rate: 2.048Mbps ±50ppm
Code type: HDB3 code, G.703 standard
Input impedance: 75Ω or 120Ω
Frame structure: G.704, G.706
Jitter: G.742, G.823 | <ul style="list-style-type: none"> ➤ PDH Optical Interface
Bit rate: 150Mbps ±50ppm
Output optical power: ≥-15dBm
Receiving sensitivity: ≤-35dBm
Optical wavelength: 1310nm/1550nm
Optical interface connector: SFP/LC |
| <ul style="list-style-type: none"> ➤ Power Supply
Input voltage: -48Vdc or 220Vac
Voltage range: -36Vdc ~ -72Vdc, 176Vac ~ 264Vac
Power consumption: <360W | <ul style="list-style-type: none"> ➤ Ethernet Interface
Bit rate: 10/100Mbps, half/full duplex auto
Standard: IEEE 802.3, IEEE 802.1Q (VLAN)
Connector: RJ45 |
| <ul style="list-style-type: none"> ➤ Operation Environment
Working temperature: -10°C ~ 50°C
Working humidity: 5% ~ 95 % (non-condensed)
Storage temperature: -40°C ~ +80°C | <ul style="list-style-type: none"> ➤ Mechanical Structure
Dimension: 440mm x 276mm x 154mm
Net weight: 15Kg |

Applications:

