

ShinewayTech® MTP-200 series are the compact multi-functional platform, which are specially designed for FTTx/WAN applications and can meet all test requirements of installers, contractors and service operators during network installation, construction, maintenance and troubleshooting. It is convenient and accurate for auto/manual testing, multi-wavelength testing and multifunctional analysis.



ShinewayTech®

Hand-held High Performance OTDR

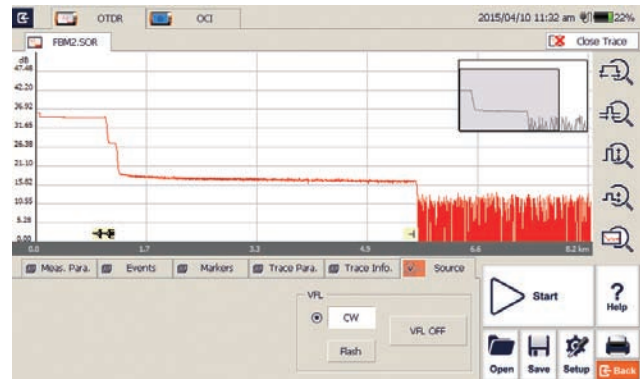
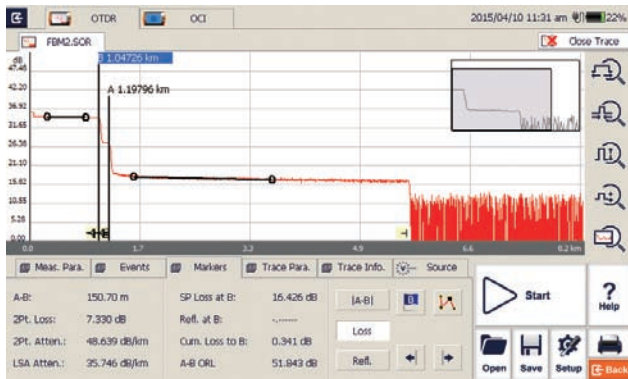
MTP-200 Series

Multi-Function and High Performance OTDR Testing

- Dynamic Range up to 50dB
- Short zone: EDZ 0.8m, ADZ 4.5m
- Auto/Manual test and analysis
- Multi-wavelength testing
- Visible laser source function
- In-Line test and through Splitter test (1625/1650nm with filter)
- OTDR Module up to four wavelengths, SM/MM Option
- Fault locating, fiber length/loss/return loss measurement, connector/ splice/ splitter/ macro bend/fiber-end detection
- LAN/WAN/FTTx application
- GR-196-CORE (.SOR) file format
- SOR and JPG file format
- Flexible file Naming

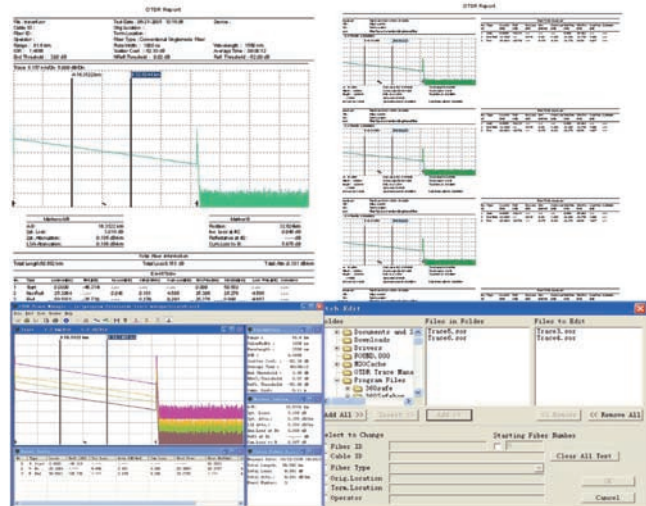
Optimized Platform Performance

- Lightweight, 2.1kg
- 7 inch touch screen
- High strength protect horn
- Excellent Man-Machine interface for easy operation
- Damp-dust-shock proof
- Optimized power management: 10 hours continuous operation
- Fast power up and off with Windows CE
- Direct printing function(compatible with PCL printers)
- Remote/local control by PC



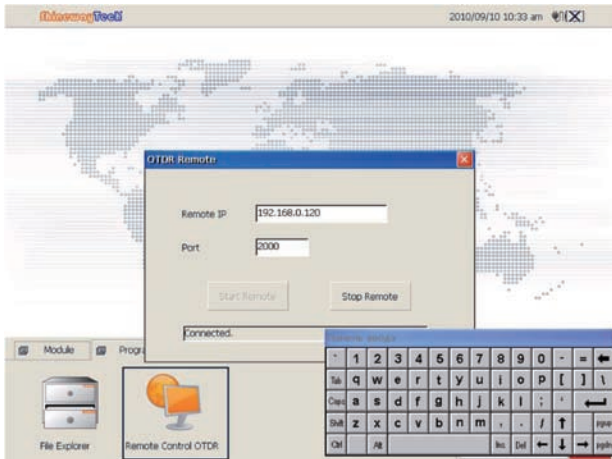
MTP Suite PC Software

- Multi traces analysis
- Single/multi traces printing in one report
- Batch editing and printing
- Bidirectional traces analysis
- CSV report formats
- Remote control function



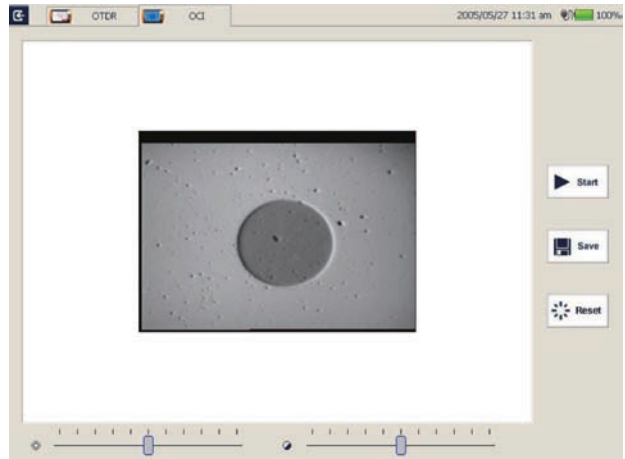
Network Remote Control Module (optional)

- Convenient networking
- Remote control instrument operation



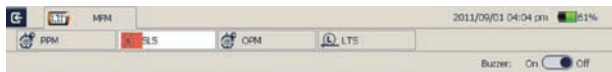
Optical Connector Inspector Module (optional)

- Focusing knob for fast focus
- Eye-safe and clear video viewing
- Interchangeable connector tips



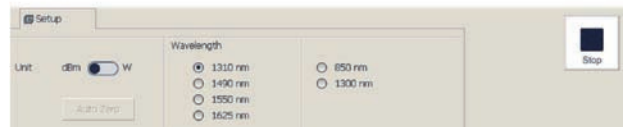
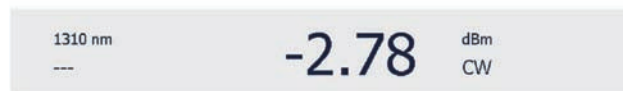
Stabilized Laser Source Module (optional)

- Wavelength same as the OTDR
- High precision and easy operation



Optical Power Meter Module (optional)

- Multi-wavelength Calibration
- High Precision
- Convenient Operation



Applications

- Installation Stage
- Service Deployment
- Maintenance Stage

Specifications

MTP-200 Series

Display	7 inch TFT Touch Screen (800×480)
Connectivity	USB×2; 10/100Mbit/s RJ-45×1
Memory	2GB
Power Supply	Rechargeable Li-Ion Battery/AC Adapter
Battery Life	10 hours continuous operation
Working Temp.	-20°C - 50°C
Storage Temp.	-40°C - 60°C
Humidity	0 - 95% (Non-Condensing)
Weight	2.1kg
Dimensions (L×W×H)	290×175×75mm

OTDR Module	Wavelength (±20nm)	Dynamic Range (dB) ⁽¹⁾	EDZ (m) ⁽²⁾	ADZ(m) ⁽²⁾
MTP-200-20VC	1310/1550	38/37	0.8	4.5
MTP-200-20VD	1310/1550	45/43	0.8	4.5
MTP-200-20VF	1310/1550	50/48	0.8	4.5
MTP-200-31VC	1310/1550/1625	38/38/37	0.8	4.5
MTP-200-31VCP	1310/1550/1625	42/41/40	0.8	4.5
MTP-200-31VCL	1310/1550/1625	38/38/37	0.8	4.5
MTP-200-31VCPL	1310/1550/1625	42/41/40	0.8	4.5
MTP-200-33VC	1310/1550/1650	42/40/39	0.8	4.5
MTP-200-40VC	850/1300/1310/1550	23/36/38/36	1.5	8/8/10/10
Selectable Range	SM: 1.3, 2.5, 5, 10, 20, 40, 80, 160, 240Km MM: 1.3, 2.5, 5, 10, 20, 40Km			
Pulse Width	SM: 5ns, 10ns, 30ns, 100ns, 300ns, 1μs, 2.5μs, 10μs, 20μs MM: 5ns, 10ns, 30ns, 1μs, 2.5μs			
Averaging Time	Quick, 15s, 30s, 45s, 60s, 90s, 120s, 180s			
Emitter Type	LD			
Connector	FC/PC (Interchangeable SC, ST and LC)			
Distance Measure Accuracy	±(1m + 10 ⁻⁵ ×distance + sampling spacing)			
Attenuation Detect Accuracy	±0.05 dB/dB			
Reflection Detect Accuracy	±4 dB			
Visible Laser Source	Output Power: ≥ -3dBm	MOD Frequency: 1Hz	Detecting Range: 5Km	

MCI100 Optical Connector Inspector Module (Optional)

Field of View	400μm×300μm
Resolution	≤1.5μm
Focusing	Manual Focus
Microscope Dimensions	Ø32×175mm

LS100 Stabilized Laser Source (Optional)

Wavelength (±20nm)	Same as OTDR's
Output Power	≥-7dBm

PM100 Normal Power Meter Module (Optional)	
Calibrated Wavelength	850nm, 1300nm, 1310nm, 1490nm, 1550nm, 1625nm, 1650nm
Measurement Range	-70dBm - +6dBm (-60dBm - +6dBm @ 850nm)
Detector Type	InGaAs
Display Resolution	0.01dB
Accuracy	$\pm 5\% \pm 0.01\text{nW}$ ($\pm 0.5\text{dB}@850\text{nm}$)

*Specifications subject to change without notice

Notes

- (1) Dynamic range measurement at 20 μ s pulse width and 180s averaging time;
(2) Dead Zone measurement at 0.6Km and reflection <-45dB; EDZ measurement at 5ns, ADZ measurement at 10ns.

Order Information:

Standard Package

MTP-200 Host, Lithium Battery, CD(User Manual + PC Software), AC adaptor, Carrying Case, Warranty card, Calibration Certificate, Package Items List.

Optional Module:

LS100: Stabilized Laser Source Module (as OTDR)

PM100: Optical Power Meter Module

MCI100: Optical Connector Inspector Module

RC100: Remote control Module

LM100: Link Image Module

