

TS-IMF2F8-P : L2 Managed Industrial Switch with PoE Injector

Product Description:

TS-IMF2F8-P is a L2 full managed Industrial Ethernet Switch, which can provide economical solution for your Ethernet. Its dustproof fully sealed structure (pr protective case of IP30 level), over-current, over-voltage and EMC protected wide power input, which can work reliably in harsh and dangerous environment. It provides 8 10/100/1000Base-TX ports and 2 Gigabit SFP ports. It provides 4 or 8 PoE ports of IEEE802.3at up at 30W.



Product Features:

- Conforms to IEEE802.3, IEEE 802.3u, IEEE 802.3ab, IEEE802.3z, IEEE802.3af, IEEE802.3at
- Provides 8 10/100/1000Base-TX ports and 2 Gigabit SFP port
- Provides 4/8 PoE ports of IEEE802.3at up at 30W
- High back-plane bandwidth 5.6Gbps
- Support standard IP/ Extend IP / MAC IP / ARP ACL
- IGMP snooping and IGMP Query mode for Multi-media application
- Port mirror and bandwidth control
- Supports GVRP function
- IEEE802.3x Flow control
- Support Port Based VLAN / 802.1Q Tag VLAN
- Support IEEE802.3ad Port trunk with LACP
- Support Spanning tree protocol IEEE 802.1d
- Supports IEEE 802.1p class of service
- Support IEEE 802.1x user authentication
- Support Broadcast storm filter
- Support DHCP server and client
- Support System event log
- Support command line interface management
- Management by Web/SNMP/Telnet/Console
- Surge protection for power port and data ports
- Wide power input: 44V~57VDC
- Wide working temperature: -40~70□
- IP30 DIN-Rail mounting metal case
- 200,000 hours MTBF (Parts count reliability prediction)

Product Specifications:

Item	Description
Summarize	
Fixed port	8 10/100/1000Base-TX ports. 2 Gigabit SFP ports. 1 Console port.
LED Indicators	PWR, PoE and Link/Act LED.
Input voltage	44V~57V DC
Power consumption	≤15W(For Switch Part)
Operating temperature	-40□~70□
Storage temperature	-40□~70□.
Relative humidity	5%~95% (non-condensing).
PoE	
PoE port	4 or 8 10/100/1000Base-TX ports.
PoE Power Budget	120W for 4 PoE; 240W for 8 PoE
PoE Standard	IEEE802.3af & IEEE802.3at, per port up to 30W.
Pin assignment	V- (RJ45 Pin 1, 2), V+ (RJ45 Pin 3, 6).
PoE management	Support Port-base PoE status view and control.
Layer 2 Switching	
Switching capacity	5.6G
MAC address table	8K, Support MAC address table management.
MAC Address Binding	Support.
MAC Address Filtering	Support.
MAC Address Learning control	Control number of port-based MAC address learning.
Jumbo Frame	Jumbo packets up to 16379 bytes.
Port Feature	Port Control. Port Isolation. Port Self-loop Detection.
Port Mirroring	Support.
VLAN	4K 802.1q VLANs, Support Ingress filter.
Link Aggregation	Up to 8 maximum aggregation groups, each containing up to 8 ports.
Traffic control	IEEE 802.3x full-duplex flow control.
Rate Limit	Unit: 64kbps.
Spanning Tree	IEEE 802.1d Spanning Tree Protocol (STP) IEEE 802.1w Rapid Spanning Tree Protocol (RSTP) IEEE 802.1s Multiple Spanning Tree Protocol (MSTP)
Ring Protocol	Support EAPS.
Multicast	Support 256 Multicast groups. Support IGMP Snooping.
Layer 3 Switching	
Static ARP	Support.
Static Routing	Support.
L3 VLAN interface	Up to 32 L3 VLAN Interface.
Convergence	
QoS	4 output queues on each port.

	Support flexible queue scheduling algorithms: WRR, Q+WRR. Support port-based / MAC-based / 802.1p / DSCP classification.
Security	
ACL	Support Standard IP / Extend IP / MAC IP / ARP Support 512 entries
Security Features	Support MAC-based 802.1X authentication. Support AAA/RADIUS authentication. Support WEB/Telnet password protection. Support Accessing privilege mode password protection.
Self-protection	Support CPU Self-protection.
Management	
CLI	Support CLI (Commend Line Interface) configuration mode.
Console	Support Configuration via the console port.
Telnet	Support Local/remote configuration via Telnet.
WEB	Support WEB management system.
SNMP	Support System configuration with SNMP v1/v2/v3.
User Management	Support Multi-user management.
System Log	Support.
Configuration Download/Upload	File Support Download/Upload configuration File via WEB/TFTP.
Upgrade Firmware	Support Upgrade Firmware via WEB/TFTP/Console.
Debug	
PING	Support.
TRACEROUTE	Support.
Telnet client	Support.
Process View	Support.

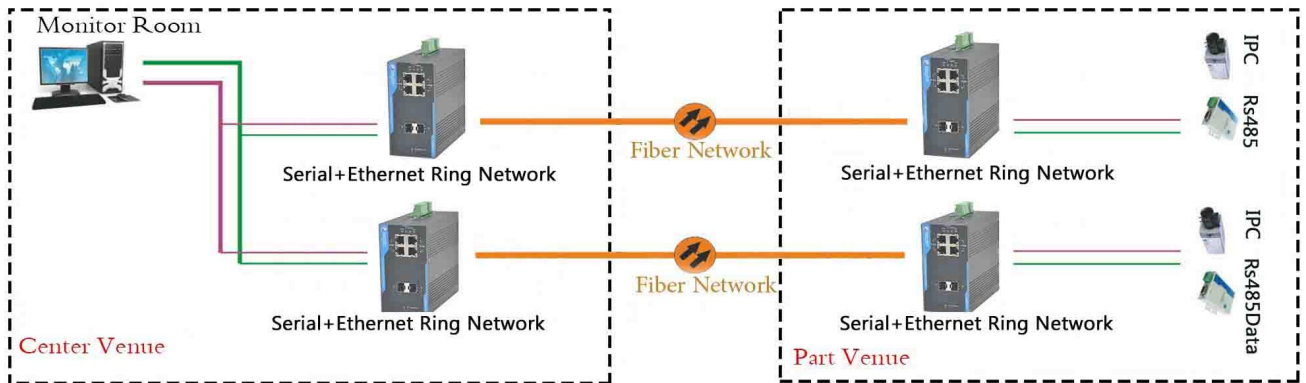
Order Information:

TS-IMF2F4-P	4FE+2G Managed Industrial Switch with 4 PoE Injector
TS-IMF2F8-P	8FE+2G Managed Industrial Switch with 8 PoE Injector

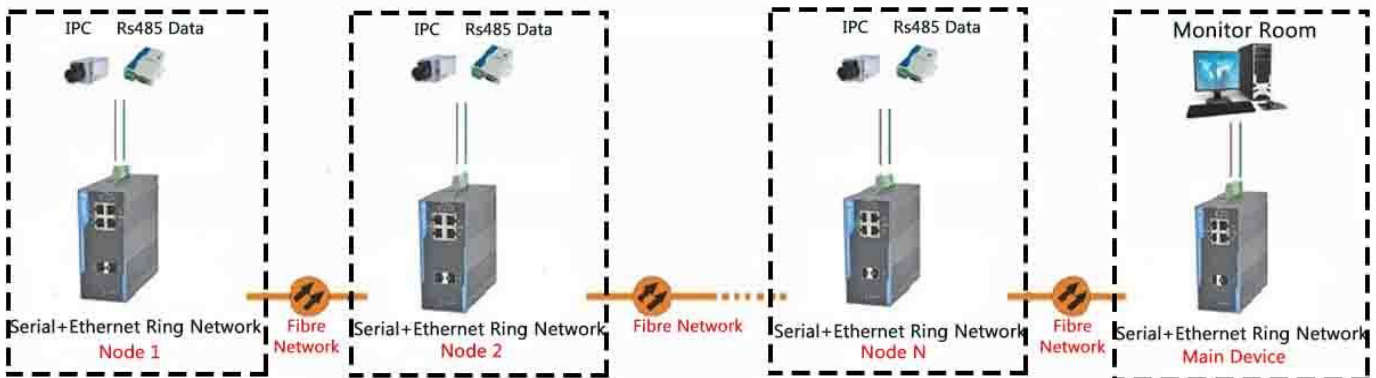
Application:

The product supports a variety of fiber optic network topologies: point to point communications, chain network, star and redundant ring network protection, self-healing topologies, and networking for more complex network topologies on this basis

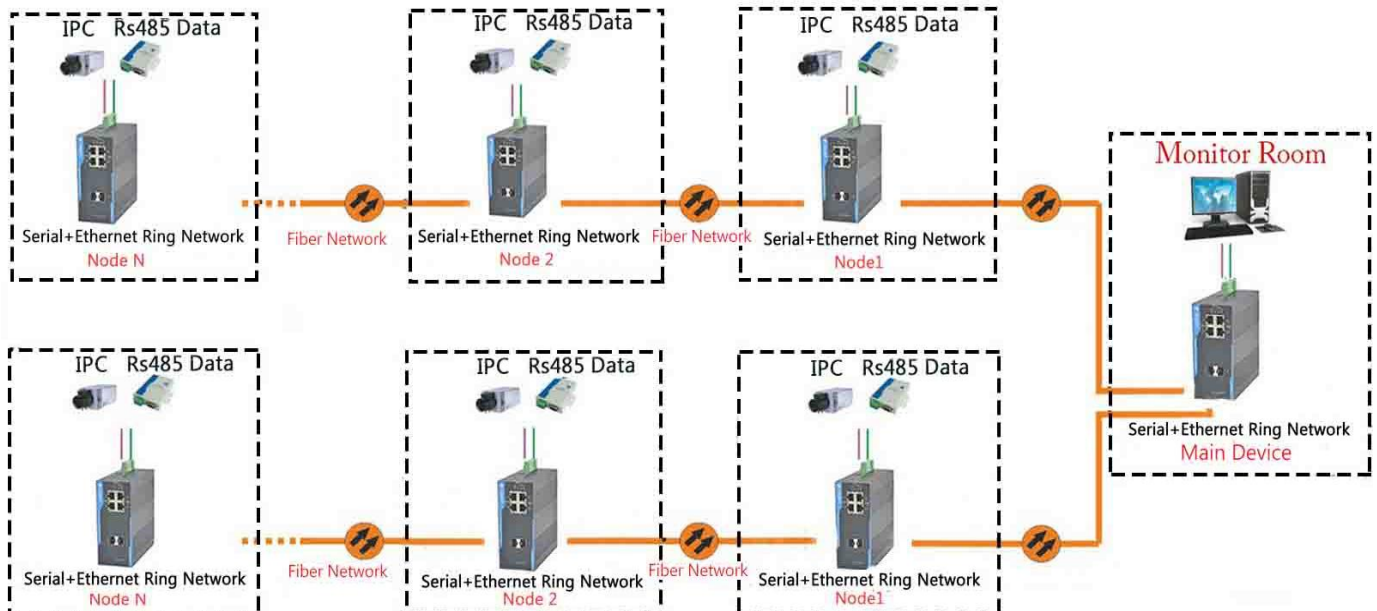
◆ **Point (Point to Point) Applications:**



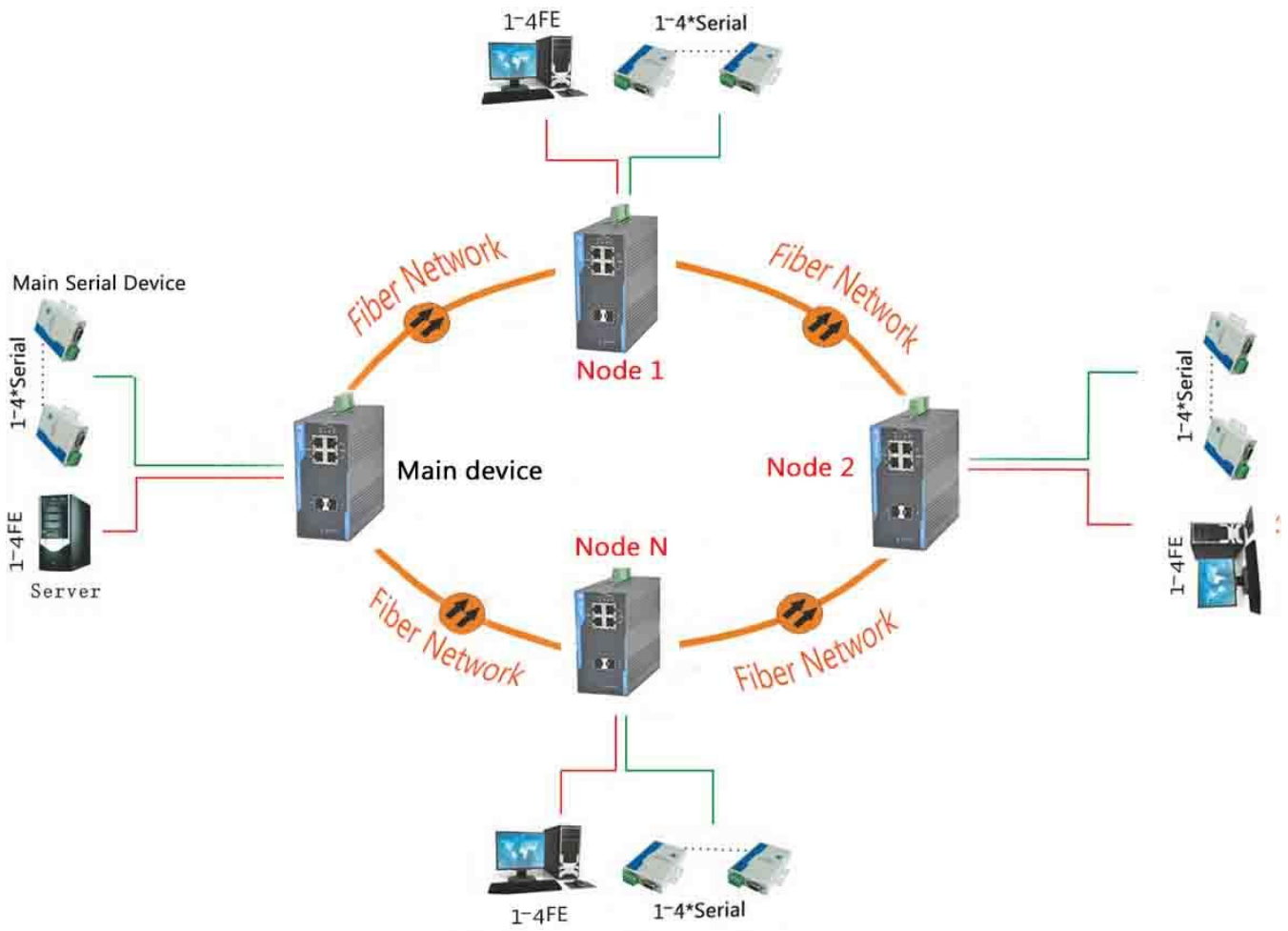
◆ **chain (Line) Applications:**



◆ **Star (Star) Applications:**



- ◆ **Ring (Circle) Applications:** When among a plurality of nodes required to provide redundant fiber link guarantee reliable communication bus:



This series of products and flexible, at the same time, the products can be dual optical port dual-fiber ring network redundancy, when somewhere in the fiber failure, the system will rebuild the network links within 20ms to ensure the normal communication systems, to achieve the self-healing protection bus signal transmission, network troubleshooting system will automatically restore;