

# TS-9U64OUT outdoor enclosure

19" outdoor enclosure



## FEATURES:

TS-9U64OUT outdoor enclosure is a professional outdoor enclosure used in outdoor environment, like parks, mountains, roads, etc.

19" communication equipment, power supply device, temperature control equipment, transmission equipment and other 19" supporting equipment can be installed in the TS-9U64OUT outdoor cabinet, which can provide reliable mechanical and environmental protection for the daily operation of internal equipment.

- The whole cabinet body is seamless which is welded with aluminum, with stable structure and IP55 protection class, protecting the internal equipment from the interference of external harsh environment.
- The cabinet surface is subject to multiple protective treatment, professional outdoor powder spraying, acid and alkali corrosion resistance, salt spray humidity resistance, UV resistance with more than 80% reflectivity.
- Perfect air duct design of pressure chamber, physical circulation and efficient heat dissipation.
- There are three layers of insulation design around the cabinet, with aluminum foil insulation material in the middle, providing thermal insulation and moisture-proof, and the comprehensive thermal insulation and heat transfer coefficient will not be greater than  $1.52 \text{ W}/(\text{m}^2 \cdot \text{K})$ .
- With classic  $90^\circ$  guiding channel design, the enclosure body and door are seamless with the result of the pure polyester foam, ensuring sealing and waterproof and dustproof.
- The cabinet door is equipped with windproof structure device, and the opening angle is more than  $90^\circ$ .
- The front door adopts two-stage zinc alloy hinge, while the door lock adopts special security lock -three-point locking structure (supporting padlock) to ensure the security of the equipment.
- The top independent and openable slope type rainproof cap is designed to facilitate maintenance, with great drainage, and the hidden brim holes are used for efficient heat dissipation.
- 2-way thermostat cooling fan unit installed on the top of the cabinet, supplies intelligent temperature control, with all-around circling, heat dissipation and protection, as well as strong expansibility.
- Waterproof louver on both sides of the enclosure, built-in dust-proof and insect-proof protective covers. With
- integrated induction lighting inside the cabinet, light is on when door opens while off when closes. The
- front and rear 19" mounting profiles are adjustable, make the cabinet meet the requirements on different installation depths of equipments.
- Good equipotential grounding conduction performance and strong protection ability against various outdoor electromagnetic pulse surges such as lightning.
- Cable input: from bottom.
- Installation: pole hanging, wall-mount and floor installation.



## SPECIFICATIONS:

- Material: Aluminum and SPCC
- Surface: Epoxy powder coated
- Static loading capacity: 350kgs(stand at floor)
- Protection class: IP55

## STANDARDS:

- GB 4208-2008(Enclosure protection class)
- GB/T19520.2
- YD/T 1537-2015(Outdoor cabinet for communication system)
- IEC60950-22
- ANSI/EIA RS-310-D.
- IN41494:PART1;DIN41494:PART7



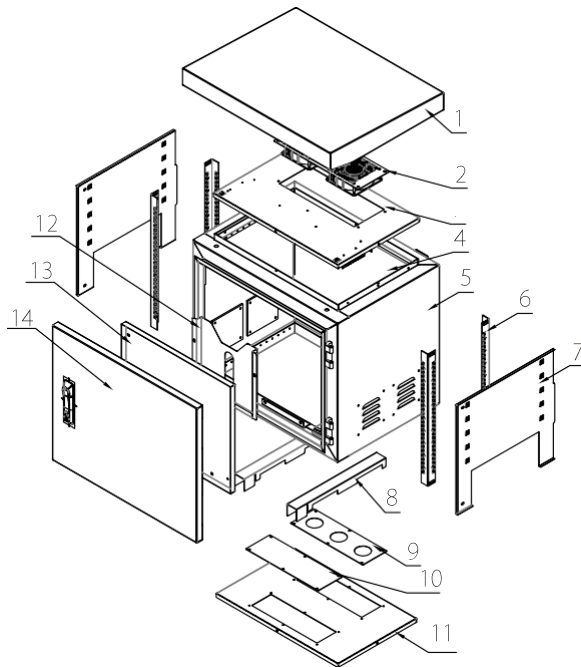
## Applied:

- re:  $-20^\circ\text{C} \sim +45^\circ\text{C}$  Humidity: 5-85 RH
- (Non-condensing ) Atmospheric
- pressure:  $60 \sim 106 \text{ kPa}$  Total solar
- radiation:  $1120 \times (1 \pm 10) \text{ W}/\text{m}^2$

# TS-9U64OUT outdoor enclosure

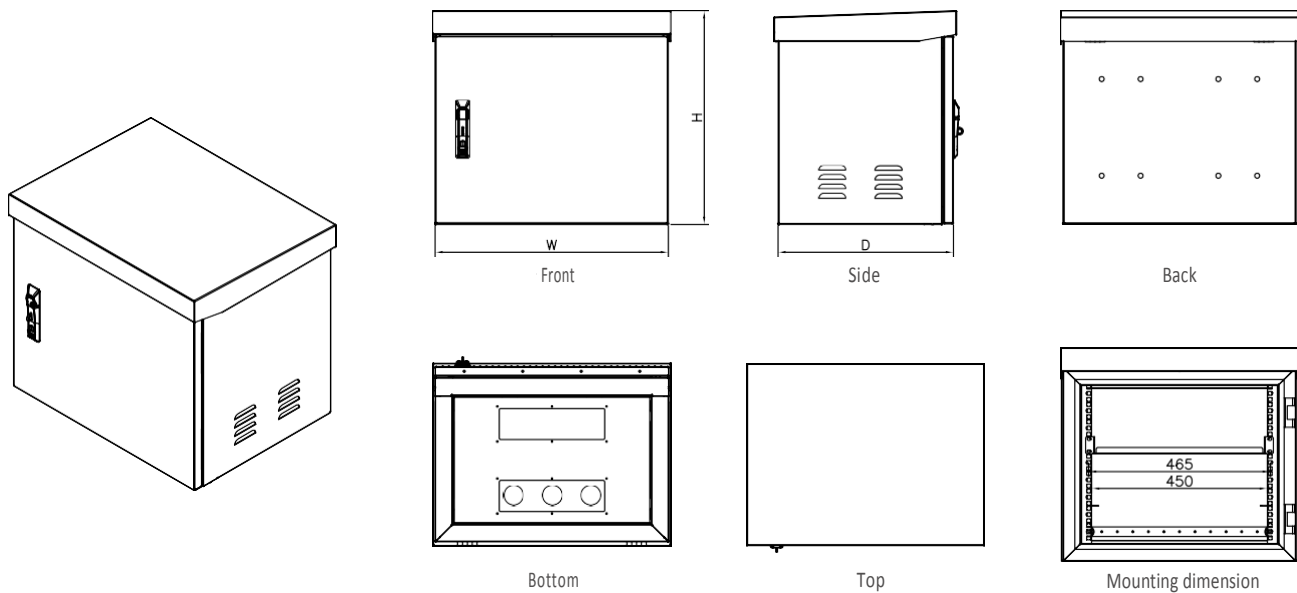
19" outdoor enclosure

## Structure:



- 1, Top cap
- 2, Fan unit
- 3, Top plate
- 4, Rear inner sealing plate
- 5, Enclosure body
- 6, Mounting profile
- 7, Side inner sealing plate
- 8, Cushion block
- 9, Cable entry plate (with holes)
- 10, Cable entry cover
- 11, Bottom plate
- 12, Documents folder
- 13, Sealing plate of front door
- 14, Front door

## MAIN DIMENSIONS:



## ORDERING MODEL:

Model No.	Capacity	Width (mm)	Depth (mm)	Height (mm)	Assembled packing dimension (mm)	Assembled Volume (cbm)
TS-9U64OUT	9U	600	450	495	630*480*530	0.16

COLOR OPTIONS: GRAY: RAL7035

# TS-9U64OUT outdoor enclosure

19" outdoor enclosure

## Main Parts:

S/N	Specification	Qty	Unit	Material	Surface finishing	Remark
1	Top cap	1	PC	AI 5052=1.5	Powder coated	---
2	Fan unit	1	PC	SPCC=1.0	Powder coated	---
3	Top plate	1	PC	SPCC=1.0	Powder coated	---
4	Rear inner sealing plate	1	PC	SPCC=1.0	Powder coated	---
5	Enclosure body	1	PC	AI 5052=2.0	Powder coated	Welded structure
6	Mounting profile	4	PC	SPCC=2.0	Zinc plated	Zinc plated
7	Side inner sealing plate	2	PC	SPCC=1.0	Powder coated	---
8	Cushion block	2	PC	SPCC=1.0	Powder coated	---
9	Cable entry plate(with holes)	1	PC	SPCC=1.0	Powder coated	Seal rubber
10	Cable entry cover	1	PC	SPCC=1.0	Powder coated	---
11	Bottom plate	1	PC	SPCC=1.0	Powder coated	---
12	Documents folder	1	PC	ABS	Powder coated	---
13	Sealing plate offront door	1	PC	SPCC=1.0	Powder coated	---
14	Front door	1	PC	AI 5052=2.0	Powder coated	---

## Optional accessories:



Thermostat



Air switch



Cantilever shelf



Waterproof rubber cover



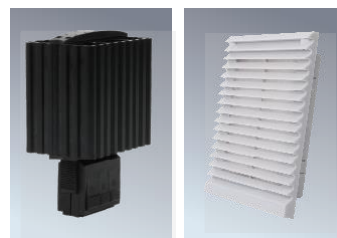
Indicator light



Terminal connector



Clamp



Heater



Louver cover